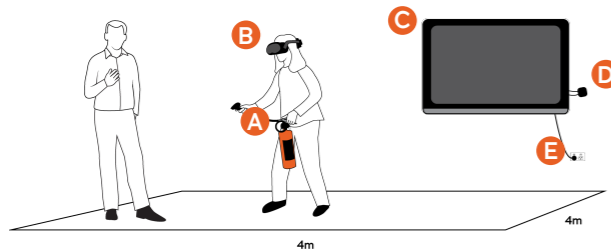


What's in the box?

The equipment is across several layers within the same case. Use the following checklist to familiarise yourself with the FLAIM Extinguisher unit.

Training space setup



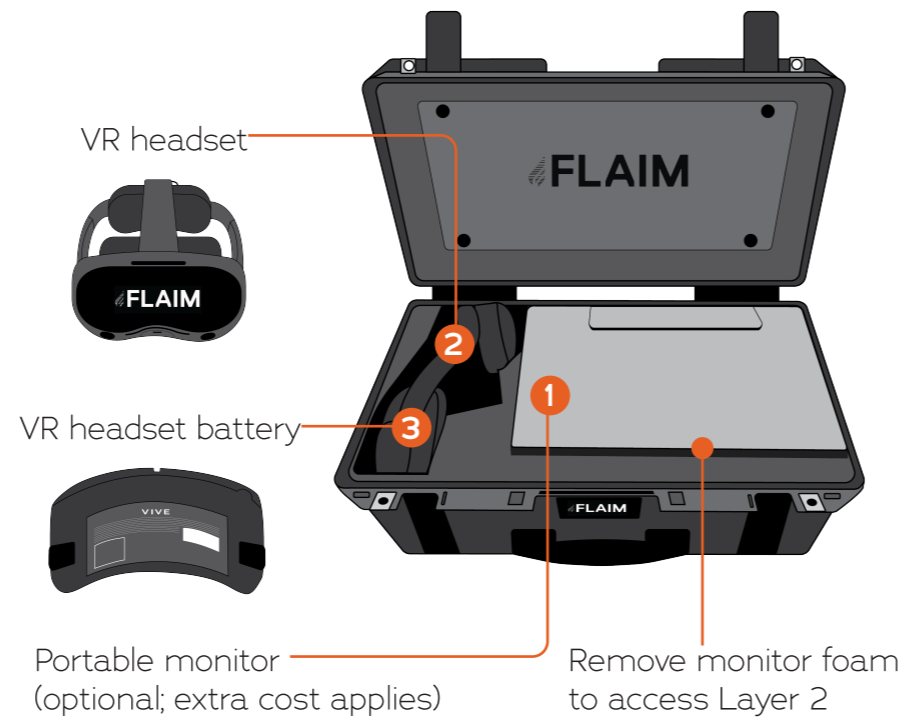
- A Extinguisher / Hose Assembly
- B VR Headset
- C External Display / Monitor (can be anywhere in training space)
- D HDMI receiver
- E Power supply / outlet

The training space should be a minimum of 4m (12') square.

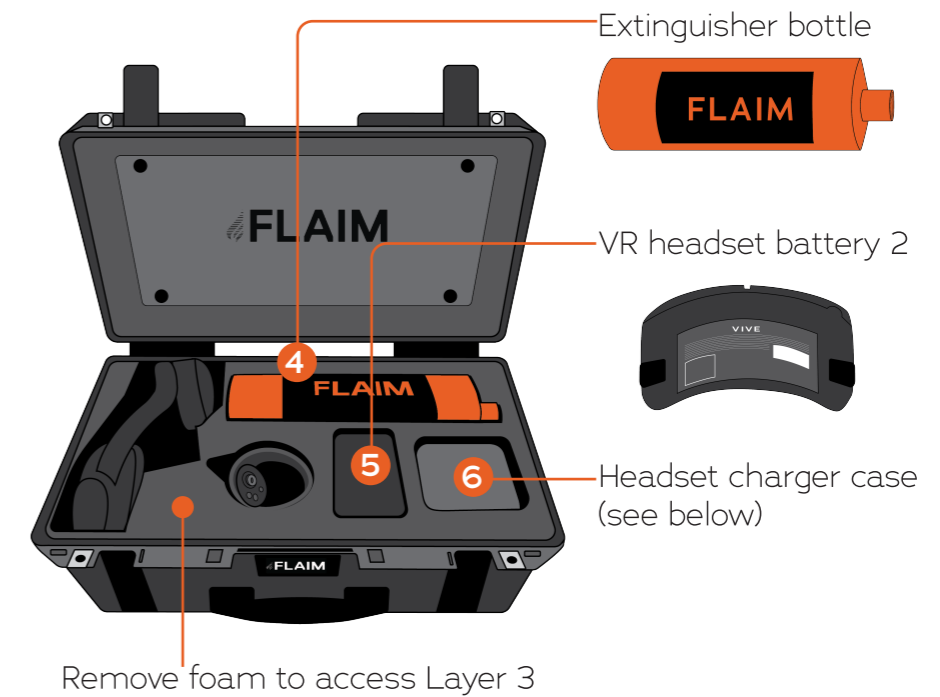
The workplace should not contain furniture, large mirrors or highly reflective surfaces. It should not be in direct sunlight.

Congratulations on your purchase of the FLAIM Extinguisher. To access support visit <https://support.flaimsystems.com>

Layer 1



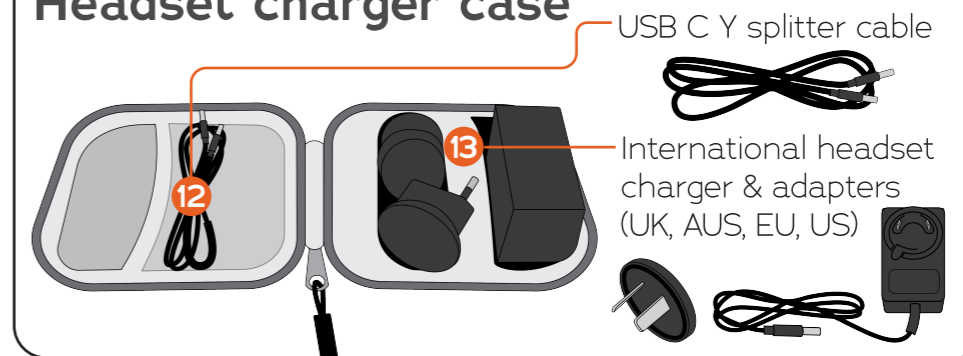
Layer 2



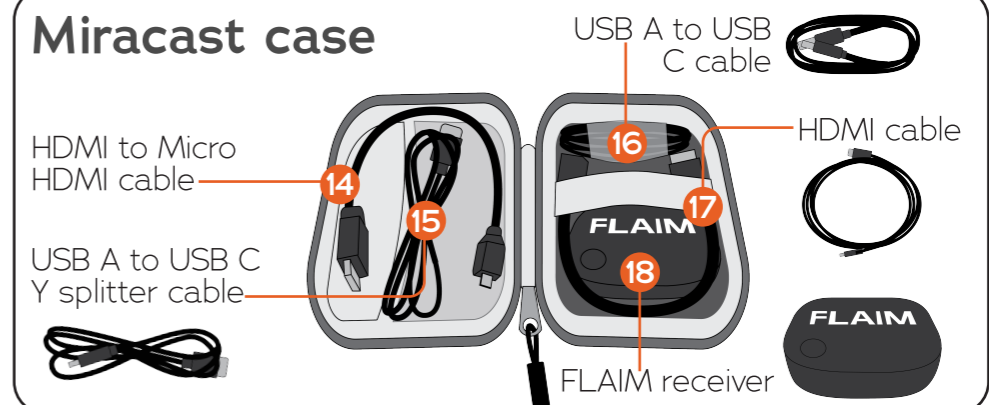
Layer 3



Headset charger case



Miracast case



FLAIM™

Safer | Smarter | Deeper Learning

To access support visit <https://support.flaimsystems.com>

Quick Start Guide

1 Connect to the external display

2 Assemble the extinguisher

3 Power up the headset and adjust head strap and distance between your eyes as needed

4 Any time you see the spinning triangle, look at your feet

5 Power on the hose tracker and trigger assembly controller with a single tap on the power button

6 Hold the hose close to the tracker. To navigate, use the end of the hose as a laser pointer and select options with a quick press of the selection button

7 Select the Cast button to open the casting menu and select your FLAIM receiver

8 Optional: Connect to WiFi

9 Select Extinguisher to go to the launch screen

10 Select Launch and you're ready to go!

11 When finished, power off headset and controllers

Charging

Headset Headset battery Tracker & Controller